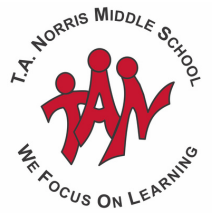




TA NORRIS MIDDLE SCHOOL

Sept 19th, 2025



We are now three weeks into the school year, and it's been wonderful to see students and staff settling so well into the routines of daily school life. The hallways are full of energy, and classrooms are alive with learning, collaboration, and connection. It truly feels like we're off to a strong start!

We're also happy to share that the Hot Lunch Program is officially back up and running. A huge thank you to our volunteers who have already stepped in to help. If you are looking for ways to get involved, we are always welcoming new volunteers to support this program—whether it's serving lunches, organizing orders, or helping behind the scenes. Every bit of help makes a difference!

A big shoutout goes to our Top Wolves Leadership Class for organizing and leading a fantastic school-wide Timberwolves Team Building Afternoon last week. Students from Grades 5 through 8 were grouped together for a fun-filled afternoon of games and activities. It was amazing to see students building friendships, working together, and creating lasting memories across grade levels. Events like this are an important part of what makes our school community so special.

As always, thank you for your continued support. Let's keep the positive momentum going!

Warm regards,
Jon Pittman
Principal

Our Lost and found pile is growing by the day !!!



Congratulations!

Boys and Girls Jr.
Nomads Won **GOLD** at
the Prairie River
Volleyball Tournament
last weekend !!!

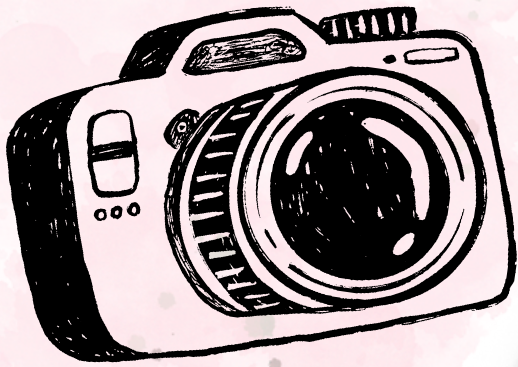


*Best
of
Luck*

Jr Nomads and TA Timberwolves
at their next tournament this weekend in
Fairview !!!

Reminder **NO**
SCHOOL

Friday
September
19th, 2025



PICTURE DAY

October 1st
Grade 5 & 6's

October 2nd
Grade 7 & 8's



TA Norris Middle School

Let's Keep Terry's Dream Alive !!



Date: Thursday, September 25, 2025
Where: School Grounds

FUNDRAISING INFO: All donations must be made:

- ◆ Online — or —
- ◆ By Cheque (made out to The Terry Fox Foundation)
- ◆ No cash donations, please!

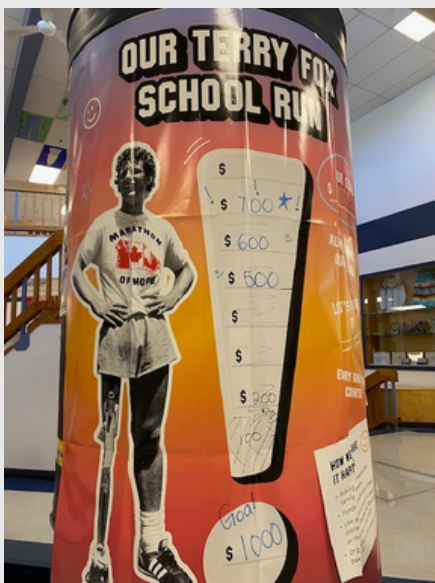
AWESOME PRIZES UP FOR GRABS!

Top Fundraiser: Lunch Out with the Principal!

2nd Place Fundraiser: Swag Bag!

Top Fundraising Class: Pizza Party!

Help us reach our goal and honour a true Canadian hero!



Let's run for Terry!



SLEDGE HOCKEY



October is our **FREE TRY-IT** month

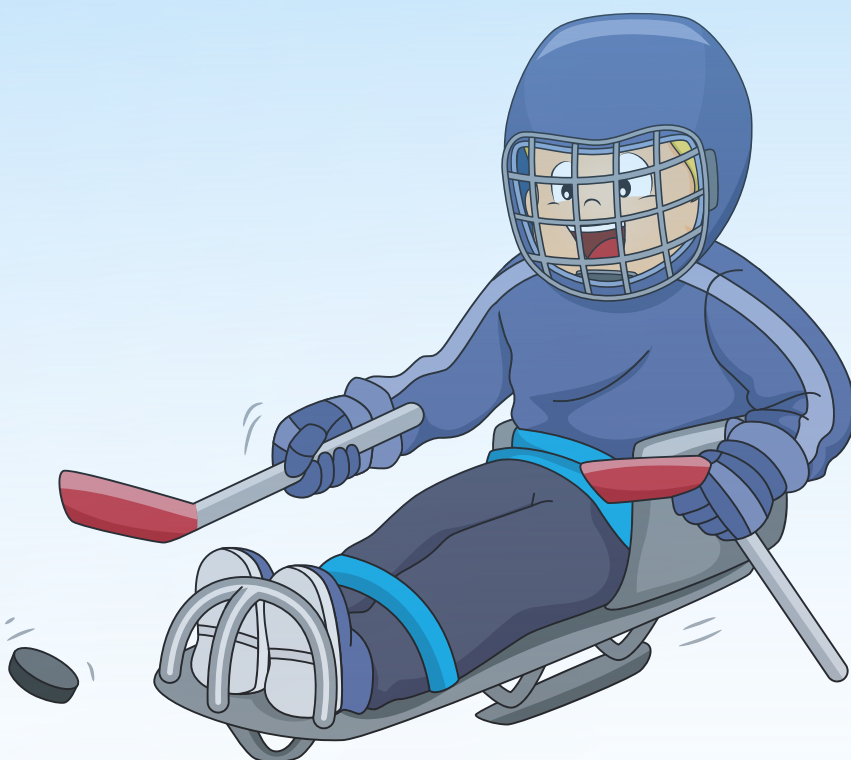
Come check out sledge hockey, an inclusive program for all ages and abilities. Equipment provided, just bring a hockey helmet and gloves if you have them.

When: Oct 3rd, Oct 17th, Oct 24th

(Fridays) 6 - 7pm

Where: Mile Zero Arena, Grimshaw

Cost: FREE





ONLINE REGISTRATION

2025 2026 Online Registration for Returning Students

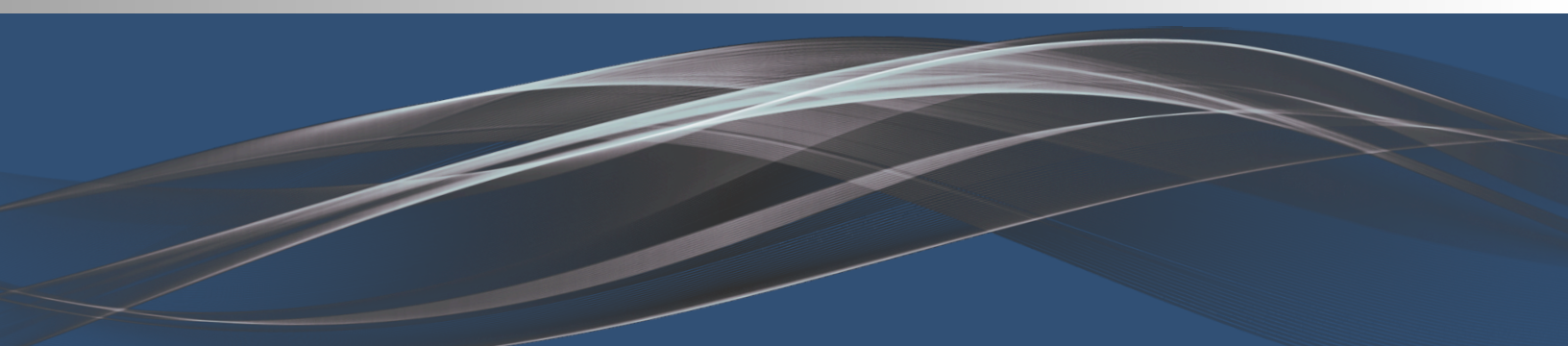
In the Spring we distributed/emailed letters containing your Snapcodes to electronically register your child as a returning student for the 2025-2026 School year. Reminders were sent out over the summer. Please take the time to update the information/data on the form and return it to us as soon as possible if you have not already done so.



Pay for student items online

School Cash Accounts

If there are any fees for your child, such as sports fees, school textbooks, class field trips, they will appear on your child's account. Please take the time to set up your SchoolCash account and make any outstanding fee payments. You will find the easy sign-up on the Peace River School Division's website, the waffle buttons on the upper right-hand corner and selecting School Cash Online Payments. This will also be used to order hot lunches once the program has been organized.





FINAL APPROVED 2025-2026 SCHOOL YEAR CALENDAR

AUGUST 2025

| | | | | | | |
|-----|----|------|----|----|----|-----|
| S | M | T | W | T | F | S |
| | | | | | | 1 2 |
| 3 | 4 | 5 | 6 | 7 | 8 | 9 |
| 10 | 11 | 12 | 13 | 14 | 15 | 16 |
| 17 | 18 | 19 | 20 | 21 | 22 | 23 |
| 24 | 25 | 26 | 27 | 28 | 29 | 30 |
| OD3 | | ID 0 | | | | |

SEPTEMBER 2025

| | | | | | | |
|-------|----|-------|----|----|----|----|
| S | M | T | W | T | F | S |
| | 1 | 2 | 3 | 4 | 5 | 6 |
| 7 | 8 | 9 | 10 | 11 | 12 | 13 |
| 14 | 15 | 16 | 17 | 18 | 19 | 20 |
| 21 | 22 | 23 | 24 | 25 | 26 | 27 |
| 28 | 29 | 30 | | | | |
| OD 20 | | ID 19 | | | | |

OCTOBER 2025

| | | | | | | | | |
|------|----|------|----|----|----|----|----|----|
| S | | | M | T | W | T | F | S |
| | | | | | | 1 | 2 | 3 |
| 4 | 5 | 6 | 7 | 8 | 9 | 10 | 11 | 12 |
| 13 | 14 | 15 | 16 | 17 | 18 | 19 | 20 | 21 |
| 22 | 23 | 24 | 25 | 26 | 27 | 28 | 29 | 30 |
| 31 | | | | | | | | |
| OD21 | | ID20 | | | | | | |

NOVEMBER 2025

| | | | | | | |
|------|----|------|----|----|----|----|
| S | M | T | W | T | F | S |
| | | | | | | 1 |
| 2 | 3 | 4 | 5 | 6 | 7 | 8 |
| 9 | 10 | 11 | 12 | 13 | 14 | 15 |
| 16 | 17 | 18 | 19 | 20 | 21 | 22 |
| 23 | 24 | 25 | 26 | 27 | 28 | 29 |
| OD19 | | ID18 | | | | |

DECEMBER 2025

| | | | | | | |
|-------|----|-------|----|----|----|----|
| S | M | T | W | T | F | S |
| | 1 | 2 | 3 | 4 | 5 | 6 |
| 7 | 8 | 9 | 10 | 11 | 12 | 13 |
| 14 | 15 | 16 | 17 | 18 | 19 | 20 |
| 21 | 22 | 23 | 24 | 25 | 26 | 27 |
| 28 | 29 | 30 | 31 | | | |
| OD 15 | | ID 15 | | | | |

JANUARY 2026

| | | | | | | |
|------|----|------|----|----|----|----|
| S | M | T | W | T | F | S |
| | | | | 1 | 2 | 3 |
| 4 | 5 | 6 | 7 | 8 | 9 | 10 |
| 11 | 12 | 13 | 14 | 15 | 16 | 17 |
| 18 | 19 | 20 | 21 | 22 | 23 | 24 |
| 25 | 26 | 27 | 28 | 29 | 30 | 31 |
| OD20 | | ID20 | | | | |

FEBRUARY 2026

| | | | | | | |
|------|----|------|----|----|----|----|
| S | M | T | W | T | F | S |
| 1 | 2 | 3 | 4 | 5 | 6 | 7 |
| 8 | 9 | 10 | 11 | 12 | 13 | 14 |
| 15 | 16 | 17 | 18 | 19 | 20 | 21 |
| 22 | 23 | 24 | 25 | 26 | 27 | 28 |
| OD19 | | ID19 | | | | |

MARCH 2026

| | | | | | | |
|---------|----|-------|----|----|----|----|
| S | M | T | W | T | F | S |
| 1 | 2 | 3 | 4 | 5 | 6 | 7 |
| 8 | 9 | 10 | 11 | 12 | 13 | 14 |
| 15 | 16 | 17 | 18 | 19 | 20 | 21 |
| 22 | 23 | 24 | 25 | 26 | 27 | 28 |
| 29 | 30 | 31 | | | | |
| OD 19.5 | | ID 17 | | | | |

APRIL 2026

| | | | | | | |
|------|----|------|----|----|----|----|
| S | M | T | W | T | F | S |
| | | | | 1 | 2 | 3 |
| 4 | 5 | 6 | 7 | 8 | 9 | 10 |
| 11 | 12 | 13 | 14 | 15 | 16 | 17 |
| 18 | 19 | 20 | 21 | 22 | 23 | 24 |
| 25 | 26 | 27 | 28 | 29 | 30 | 31 |
| OD18 | | ID17 | | | | |

MAY 2026

| | | | | | | |
|------|----|------|----|----|----|-----|
| S | M | T | W | T | F | S |
| | | | | | | 1 2 |
| 3 | 4 | 5 | 6 | 7 | 8 | 9 |
| 10 | 11 | 12 | 13 | 14 | 15 | 16 |
| 17 | 18 | 19 | 20 | 21 | 22 | 23 |
| 24 | 25 | 26 | 27 | 28 | 29 | 30 |
| OD20 | | ID19 | | | | |

JUNE 2026

| | | | | | | |
|-------|----|-------|----|----|----|----|
| S | M | T | W | T | F | S |
| | 1 | 2 | 3 | 4 | 5 | 6 |
| 7 | 8 | 9 | 10 | 11 | 12 | 13 |
| 14 | 15 | 16 | 17 | 18 | 19 | 20 |
| 21 | 22 | 23 | 24 | 25 | 26 | 27 |
| 28 | 29 | 30 | | | | |
| OD 20 | | ID 19 | | | | |

JULY 2026

| | | | | | | |
|------|----|------|----|----|----|----|
| S | M | T | W | T | F | S |
| | | | | 1 | 2 | 3 |
| 4 | 5 | 6 | 7 | 8 | 9 | 10 |
| 11 | 12 | 13 | 14 | 15 | 16 | 17 |
| 18 | 19 | 20 | 21 | 22 | 23 | 24 |
| 25 | 26 | 27 | 28 | 29 | 30 | 31 |
| OD20 | | ID19 | | | | |

| Month | Operational Days | Instructional Days |
|--------------|------------------|--------------------|
| August | 3 | 0 |
| September | 20 | 19 |
| October | 21 | 20 |
| November | 19 | 18 |
| December | 15 | 15 |
| January | 20 | 19 |
| SEM 1 | 98 | 91 |
| February | 19 | 19 |
| March | 19.5 | 17 |
| April | 18 | 17 |
| May | 20 | 19 |
| June | 20 | 19 |
| SEM 2 | 96.5 | 91.0 |
| TOTAL | 194.5 | 182.0 |

| | | |
|-----------|------|--------------------------|
| August | 27 | Staff Meeting/Prof. Dev. |
| August | 28 | PD Day Kick-Off |
| August | 29 | Staff Meeting/Prof. Dev. |
| September | 2 | First Day of Classes |
| Jan Feb | 5 | Students Back |
| March | 2 | 2nd Semester Begins |
| June | 5, 6 | Teachers' Convention |
| June | 25 | Last Day of Classes |
| June | 26 | Last Operational Day |

APPROVED HOLIDAYS

| | |
|-----------------|---------------------------|
| Labour Day | September 1 |
| Reconciliation | September 30 |
| Thanksgiving | October 13 |
| Remembrance Day | November 11 |
| Christmas Break | Dec 22 - Jan 2 (incl) |
| Christmas Day | December 25 |
| Boxing Day | December 26 |
| New Years Day | January 1, 2026 |
| Family Day | February 16 |
| Spring Break | March 30 - April 6 (incl) |
| Good Friday | April 3 |
| Easter Monday | April 6 |
| Victoria Day | May 18 |

LEGEND

| | |
|--------------|---|
| Blue | STATUTORY HOLIDAYS |
| Orange | TRUTH & RECONCILIATION (no staff or students) |
| Green | PD DAY (NO STUDENTS) |
| Red | FIRST/LAST DAY OF CLASSES |
| Yellow | OPERATIONAL DAY (NO STUDENTS) |
| Pink | NON-OPERATIONAL DAY (no staff or students) |
| Dark Blue | TEACHERS' CONVENTION |
| Grey | CHRISTMAS / SPRING BREAK |
| Light Yellow | DIPLOMA EXAMS (to be confirmed) |